

DenMat Lab Rx Form

DenMat Lab
1017 W. Central Avenue
Lompoc, CA 93436 U.S.A.

800-872-8384
lab@denmat.com
denmat.com



Customer Information

PATIENT MALE FEMALE AGE _____

ACCOUNT NUMBER _____

DR. / OFFICE NAME _____

ADDRESS _____

PHONE _____ EMAIL _____

DR.'S LICENSE NUMBER _____ LICENSE EXPIRATION DATE (MM/YY) _____

SIGNATURE _____

Service Type

- Standard Service**
\$239 — Pricing varies with material selection.
Would you like photo approvals? (\$25 each) Yes No
Please select: Wax Bisque Final
Please note that if you choose to approve photos at each stage, your approval will be required before production moves to the next phase.
- Signature Service**
\$279 — Includes advanced color matching, artistry, state-of-the-art processes, and photo documentation of the design, bisque phase, and final restorations before shipping.

ART — Additive-Reductive Template Process

Select Desired ART Preparation Approach

- Additive Only**
The patient does not want any tooth reduction.
- Strategic** — Additive and Reductive
Strategic reduction while maintaining arch form.
- Idealized** — Additive and Reductive
Moderate to significant tooth reduction to optimize esthetics.



See reverse for more detailed descriptions of ART preparations.

ART Consultation — Check here if you would like to receive a phone call from the DenMat Lab Consulting Team

ART Case Checklist. **Must submit all required materials.**

- Pre-Op VPS Impressions
- Full Face Natural Smile Photos (eyes open)
- Full Face Lateral Photo
- Full Bite Registration (no wax)
- Kois earless face bow bite plate (for 6 units or more)

Restoration Type

Lumineers®

Select the desired material/type:
 Lithium Disilicate Feldspathic – Cerinate® Lithium Disilicate with Cutback

Crowns

Select the desired material/type:
 Lithium Disilicate
 Lithium Disilicate w/Cutback
 Cerinate Full Contour (Anterior Only)
 LumiZir Zirconia Natural (High Translucency)
 LumiZir Zirconia Full Contour
 LumiZir Zirconia w/Stacked
 LumiZir Zirconia w/Cutback

Bridges

Select the desired material/type:
 Lithium Disilicate (Anterior Only, Single Pontic 3 units)
 Lithium Disilicate Onlay
 LumiZir Zirconia Full Contour
 LumiZir Zirconia Natural
 LumiZir Zirconia w/Stacked
 LumiZir Zirconia w/Cutback
 Framework Try-In

Select Pontic Design:

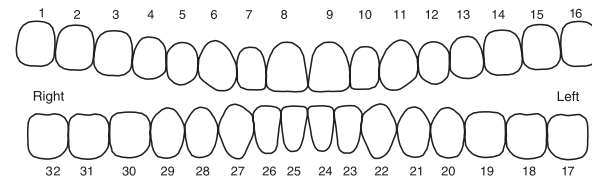
- Ovate _____ mm Full lap Buccal lap Sanitary contact

Case Design Specifications

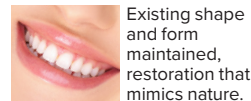
- Desired length of the centrals (mm) _____
- Placement wrap Incisal wrap
- Alignment
- Additional length: .5 mm 1 mm 1.5 mm
- Complete diastema closure
- Partial diastema closure (please specify) _____

Teeth & Style

Select the teeth to be restored:

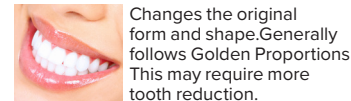


Natural



Existing shape and form maintained, restoration that mimics nature.

Hollywood



Changes the original form and shape. Generally follows Golden Proportions. This may require more tooth reduction.

Mouth Guards & Trays

- LumiGuard** Lower Arch
- Soft Mouthguard** Upper Arch Lower Arch Both Arches
- Bleaching Tray(s)** Upper Arch Lower Arch Both Arches

Prep and Opposing Adjustments

If Inadequate Clearance:

- Spot opposing
- Call me if reduction exceeds 1 mm

Conservative Prep Adjustments:

- Spot prep
- Provide a reduction guide

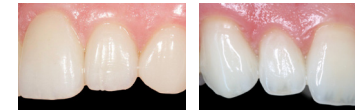
Incisal Edge Specifications:

- Central Incisors Square Round
- Lateral Incisors Square Round
- Cuspids Square Flat Round Pointed
- Bicuspid Square Flat Round Pointed

Ceramic Finishes

Shade Specification

- Monochromatic Polychromatic



Pre-op shade _____

Stump shade _____

Desired shade _____

Vita Lumin or 3D master Shade Guide preferred.

- Follow shade tab
- Add gingival warmth
- I need shade masking (Please call me)

Gingival third shade _____

Incisal third shade _____

Surface Texture

- Light
- Moderate
- Heavy

Final Glaze

- Light
- Moderate
- Heavy

Occlusal Stain

- None
- Light
- Medium
- Dark

Incisal Translucency

- None
- Minimal
- Moderate

Quick Check

Please indicate items you are sending to the DenMat Lab

- Articulator type
- Bite registration
- Diagnostic wax-up
- Impressions: Upper Lower
- Shade tab
- Photos
- Digital impression being sent
- Models: Pre-op Opposing
- Stick bite / Face bow
- Returning A.R.T. (See A.R.T. guide)

Notes _____

- Requesting consultation

NOTE: By submitting this Rx, I agree to terms and conditions on reverse side.

ART Preparation Options

Additive Only

Choose this option if the patient and doctor are unwilling to accept ANY reduction or modification at all. Although the DenMat design team will produce the best possible design, esthetics may be comprised in favor of existing tooth structure retention.

Strategic

Choose this option if the patient and doctor will allow minor modifications or contouring to the existing dentition, only when absolutely necessary on certain teeth. Modifications and or contouring will be kept in enamel only. A reduction template will be created to serve as a roadmap for success.

Idealized

Choose this option if the patient and doctor want optimal esthetics and agree to moderate tooth preparation which may be required in order to achieve ideal results. Generally, interproximal embrasures may be reduced by .3 mm to 5 mm. Facial enamel may be removed to accommodate porcelain without adding bulk, where indicated. Incisal edges are often shortened, unless the case calls for added length. A .3 mm to 5 mm shoulder margin preparation may be required with a .3 mm – 5 mm finish line on the lingual for an incisal wrap. Approximately 1 mm of incisal porcelain is needed for the incisal wrap. Soft, rounded edges are ideal (no sharp or flat edges left on the incisal edges). A reduction template will be created to serve as roadmap for success.

Depending on your Desired Preparation Approach, your ART case will come with the following:



Waxed Model



Color-Coded
Strategic Prep Model



0 - 3 Reduction
Templates



Clear Trial Smile
Matrix

All ART cases will be invoiced at the same dollar amount, regardless of preparation option. When the final Lumineers are fabricated and shipped to you, the invoice will reflect a credit of 50% back for the per unit price of the ART cost.

Shipping and Delivery Options

All delivery days are listed in lab working days, starting from date of case acceptance (including acceptable impressions/models, bite registration, and complete prescription information). Working days do not include the date the case is shipped, time in transit, weekends or holidays. Outbound shipments require a standard \$15 U.S. flat fee per case.

STANDARD

5 working days for all services from time of approval. For implant and combination cases, please allow additional time.

RUSH OPTIONS AND ADDITIONAL COSTS

Lumineers	LumiZir	ART
4 days - \$75/unit	4 days - \$35/unit	3 days - Additional \$20 per unit 4 days - Additional \$10 per unit

Shipping address:

DenMat Lab
1017 W. Central Avenue
Lompoc, CA 93436 USA

FOR DENMAT LAB USE ONLY

DATE RECEIVED #: _____ PAN #: _____

OPEN INITIALS: _____

Please see our complete Terms and Conditions available at www.denmat.com/termsandconditions

Ordering

For the best possible custom-made product, please make sure you are ordering the correct size, quantity, shade, and material application. If we make an error or if your order was inaccurate, we will make every attempt to remedy the error as quickly as possible. All orders may be subject to shipping and handling charges. "Rush" orders or orders requiring special handling may be subject to additional charges.

Product Inspection

We encourage you to inspect the product prior to acceptance. Bonding or cementing the product in a patient's mouth is considered acceptance. If you do not notify the DenMat Lab of your rejection and do not return the product to the Lab within 15 business days after your receipt of the product, you will be deemed to have accepted it.

Limited Warranty

While we believe you and your patient will be delighted with this product, we understand that 100% satisfaction is not always possible. In such event, we are happy to repair or replace, at our discretion, any product that is defective or does not meet your specifications. This is your exclusive remedy.

For all DenMat Lab restorations (excluding Snap-On Smile), DenMat's warranty obligation, with respect to an original restoration affixed to a particular tooth, is limited to one (1) time replacement for that restoration within five (5) years and covers any defects in materials or workmanship.

These limited warranties are in effect from the date the product is received and are between DenMat and the prescribing doctor. There will be no handling charge for warranty work for the first 90 days of the warranty period. After the 90 days, there will be a \$37 handling fee (US dollars) plus shipping on all warranty claims.

This limited warranty is in lieu of all other warranties, expressed or implied and is void if the product is improperly stored or used. There are no implied warranties of merchantability, fitness for a particular purpose or otherwise. Before using this product, you agree that it is your responsibility to determine whether it is suitable for the intended use and will assume all risk and/or liability associated with use of or inability to use the product. This warranty gives you specific legal rights, and you may also have other rights that vary from state to state. Some states do not allow the exclusion or limitation of incidental or consequential damages so this limitation or exclusion may not apply to you.

Our Contact Information

If you have questions or comments about our terms and conditions, we are here for you Monday through Friday from 6 a.m. to 5 p.m. (Pacific Time). Please feel free to contact our Customer Service team in any of three ways:

1. Email us at: lab@denmat.com
2. Call us at: 800-872-8384
3. Write us at:
DenMat Lab
1017 W. Central Avenue
Lompoc, CA 93436 USA
Attn: Lab Customer Service

We thank you for your business.